

BD Group

Company Profile



Bri-Dev Projects

bridev.co.za | facebook.com/BriDevProjects



PLUMBING

INTRODUCTION



Welcome to Bri-Dev Projects; turn-key solutions, for project peace of mind.

Bri-Dev offers a total-turn-key-solution to our clients. We facilitate projects and offer a range of products and services in order to simplify our clients' needs so as to deal with one supplier, one developer and ultimately one face within one project.



We are proudly South African; BEE compliant; OHS and SHE compliant and we are registered members of the NHBRC and the Gauteng Master Builders Association.

Our experienced and highly trained teams are selected specifically for every project to ensure you get the most out of your experience with us whilst we offer such services as small in-house repairs to large commercial developments. We oversee a project from the planning and architectural stages to the hand-over and soft opening.



**Bri-Dev Projects
BD Plumbing**

**info@bridev.co.za
www.bridev.co.za
Tel +27 (0) 11 444 5930
Fax +27 (0) 86 611 3717
Mob +27 (0) 82 442 7122**

We form an integral part of the project to allow our clients peace of mind; as well as a 24 hour standby team which forms part of our facilities management and maintenance division who handle the repairs and maintenance for industrial and commercial buildings.

OUR HERITAGE

In 1985 a young, ambitious Brian Abrahamson set out into the business world with BD Plumbing and Maintenance and went from strength to strength working his way from small residential projects to larger, more-high-profile projects.

With 20+ years of maintenance and construction plumbing under his belt; Brian earned the respect of many a well-known player in the industry and with the increasing demand for project management in construction and development; Bri-Dev Projects was born.

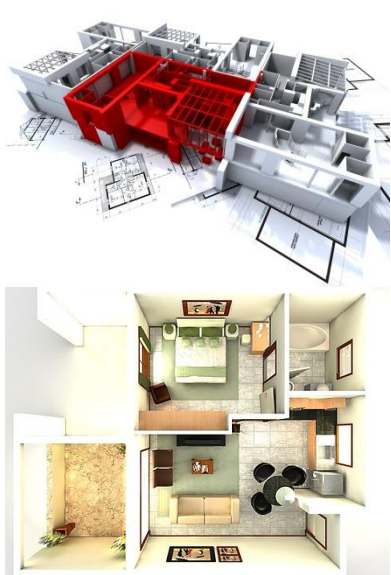
Now an integral part of the industry with key projects such as: the Oprah Winfrey Scholars project; The Clifftop Executive Hideaway Lodge development and the Hyatt Regency Hotel overhaul under foot; Brian began to look into more products and services that Bri-Dev could provide...

With a keen passion for the bush and being married to a well-respected wild-life photographer and conservation ambassador; it seemed only but too befitting that eco-efficient products and services form part of Bri-Dev's offerings and thus we are able to offer total green-friendly projects. For more information on our green products and services, see Bri-Dev Energy.

In short; Brian has created a professional organization with black empowerment, participation and strong management skills.

Please feel free to browse around our site for a more in-depth view of our company and services or [contact us](#) for more information.

No project too big or too small – we cover it all



PRODUCTS AND SERVICES

- ✓ **Full Turn-key Construction**
 - Building
 - Tiling
 - Paving
 - Painting
 - Dry Walling
 - Specialized ceilings and bulkheads
 - Granite Installations
 - Concrete form work
 - A/C Systems
- ✓ **Project Management**
- ✓ **Bush Lodge Development**
- ✓ **Restaurant & Brand Development**
- ✓ **Shop-fitting**
- ✓ **Plumbing & Drain Jetting**
- ✓ **Total Repairs & maintenance**
 - **Bri-Dev's Handyman Division**
 - Corporate
 - Hotel / Lodge
 - Commercial
 - **Facilities Management**
 - A 24-hour standby team forms part of our facilities management / maintenance division; who manage the maintenance and assist with the maintenance on industrial buildings as well as commercial buildings
- ✓ **New installations for Domestic & Commercial applications**
- ✓ **Corporate tenant installation projects**
- ✓ **Energy & eco efficient products and services**



Health and Safety

All personnel are trained by senior management on the correct application and use of all safety equipment and procedures.

We comply with the OHS Act.

BD Plumbing and Maintenance

26 years of maintenance and construction plumbing excellence

BD Plumbing and Maintenance started some 26 years ago as a plumbing operation focused solely on plumbing repairs and maintenance.

Today BD Plumbing is a large corporate plumbing company involved in many large scale developments from commercial, residential and general maintenance. Our 24 hour emergency plumbing division work hand-in-hand with our construction division and all our staff are qualified in their field of expertise. BD Plumbing strives to achieve a 45 minute turn-around time for all emergency call outs. Monthly plumbing and drain jetting contracts are also available.

BD Plumbing and Maintenance partner up with sister companies [Bri-Dev Projects](#) and [BriDev Energy](#) to offer a wide range of plumbing services such as:-

- Silent high-pressure drain jetting services
- Geberit / elektro-weld installations and repairs & maintenance including
- Elektro-Fusion welding machine hire
- Ginde installations and repairs & maintenance
- Solar Geyser installations
- Heat Pump installations
- Rain-Harvesting installations
- Consulting and insurance claims
- Contract Plumbing
- Domestic and Commercial Installations



Comprehensive 24hr - 7 days/week - 365 days/year emergency service

Choose the right team for the job



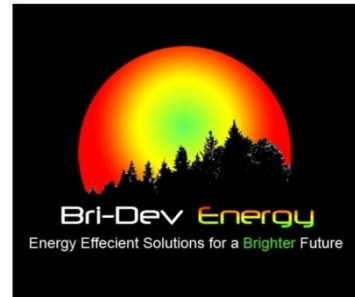
Bri-Dev Energy

A division of Bri-Dev Projects; **Go-Green Solutions** for every kind of project

With the global focus on conserving our natural resources for generations to come; Bri-Dev has joined the initiative, striving for eco-efficiency in every installation.

South Africa is such a beautiful and richly diverse country – we should all be doing our bit to reduce our carbon footprint, so please browse through our award winning product range and service offerings:-

- ✓ LED Lighting
- ✓ Solar Geysers
- ✓ Heat Pump Systems
- ✓ Rain Harvesting Systems
- ✓ Green-Coat Thermal Coating
- ✓ Rust-Coat Application
- ✓ M3T Dust Suppression



CONTACT US

Telephone

+2711 444 5930

Fax2Email

+2786 611 3717

24 Hour Emergency Line

+2782 442 7122

PA | General Enquiries

info@bridev.co.za

Brian Abrahamson

brian@bridev.co.za

Accounts Enquiries

accounts@bridev.co.za

Plumbing Manager

ryan@bridev.co.za

Sales Representative

morgan@bridev.co.za

Physical Address

Unit 20 Eastborough Business Park

15 Olympia Road, Eastgate Ext

GPS Co-Ordinates:-

Postal Address

Postnet Suite 372

Private Bag X153, Bryanston 2021

Portfolio

Restaurant Development

Restaurant

[Doppio Zero](#)

[Colcachios](#)

[Piza E Vino](#)

[Mi Vami](#)

[Godfather](#)

FSH Restaurant

Steers

Café Frappe

[The Met](#)

[Ciao Baby Cucina](#)

[Karoo Cattle and Land](#)

Senhor Calistos

KOI

Branches

Rosebank

Irene

Greenside

Mandela Rhodes Hotel CTN

Greenpoint CTN

Nicolway

Rosebank

Soweto

Lonehill

Southgate

Silverstar Casino

Centurion

Rosebank

Fontainebleau

Dainfern

Monte Casino

Monte Casino

Platinum Square Rustenburg

Rossetenville

Sandton

Branches

Sunninghill

Northriding

Cavendish Square Cape Town

Sandton City

Belvedere CTN

Westlake CTN

Melville

Rivonia

Northriding

Westgate

Ballito

Sunward Park Bassonia

Rosebank

Pub Development

Pub

Rosie O'Gradys

Keg & Aviator

Mc Ginty's

Molley Malones

Keg & Spear

Branch

OR Tambo International Airport

OR Tambo International Airport

OR Tambo International Airport

Fourways

Moses Mabida Stadium Durban

Refurbishments and Upgrades

Project

Library Gardens

Baragwaneth Hospital

Wild Coast Sun

YMCA

Klawervlei Wine Farm CTN

Fish Monger

Description

Standard Bank Building (Inner City Urban Renewal Project)

Rape Trauma Centre

Refurbishment (Project Management)

150 Rooms Apartment

Revamp

Revamp

Construction Development

Project

Oprah Winfrey Leadership Academy
Spar
Firs Shopping Centre
Hyatt Conference Centre

Description

School Phase Development
Listed and nominated main contractor
New Link Construction
Re-build

Bush Lodge Development

Project

Clifftop Bush Lodge Welgevonden
Sabie Park (Kruger National Park)
Malelane Sun – Leopard Creek

Description

Total development and procurement – turnkey
New Lodge – Hippo Hollow
Demolition Project

Housing Development

Project

Blair Athol (Gary Player Golf Estate)
Cedar Lakes
Athol
Kyalami
Blair Athol (Gary Player Golf Estate)

Description

New house revamp
500m2 house / new dwelling development
1000m2 house / new dwelling development
Total revamp 1200m2 house
Stables revamp

Plumbing

Project

Mugg & Bean
Hyatt Hotel
ABI Bottling Plant
Balfour Park Shopping Centre
Firs Shopping Centre
Van Riebeck Mall
Protea Mall
Broadacres Shopping Centre
KFC
Carlton Hair International

Branch or Description

Monte Casino
Geberit Re-pipe
Maintenance
Maintenance
Maintenance
Maintenance
Maintenance
Maintenance
Maintenance
Maintenance

Branch or Description

Norwood Mall

Construction
Construction
Construction
Construction
Construction

Various
Various